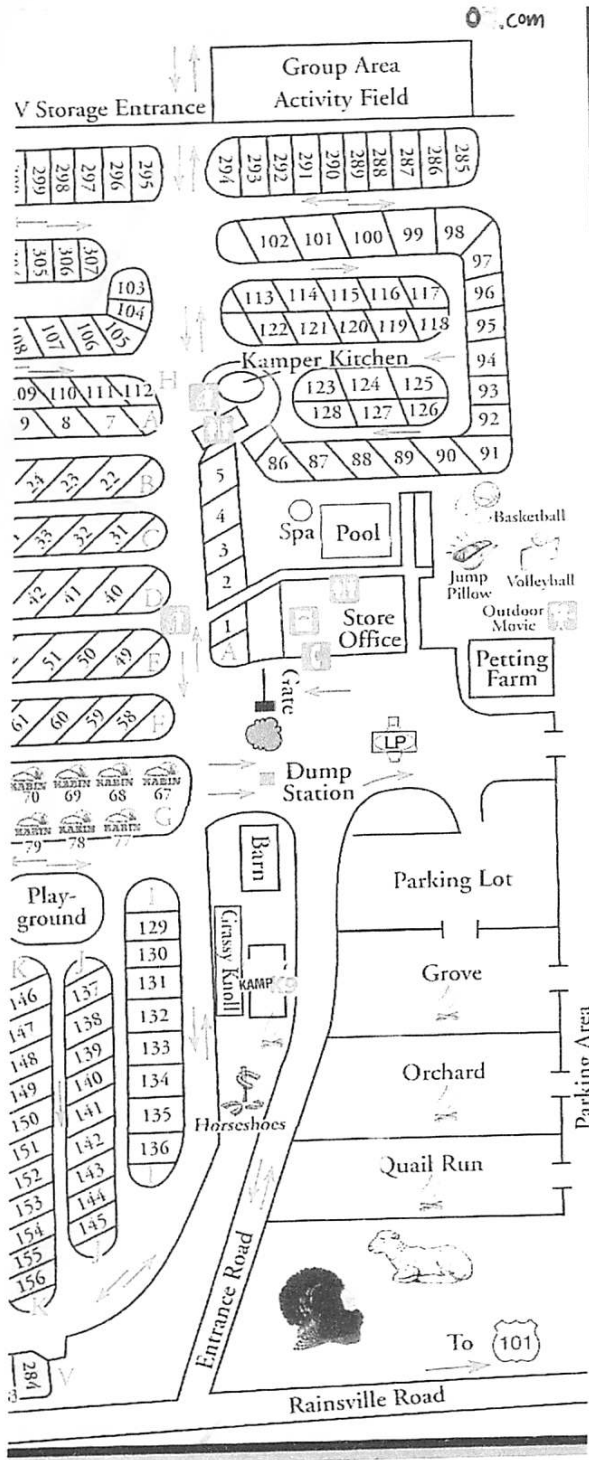


Parking and Registration

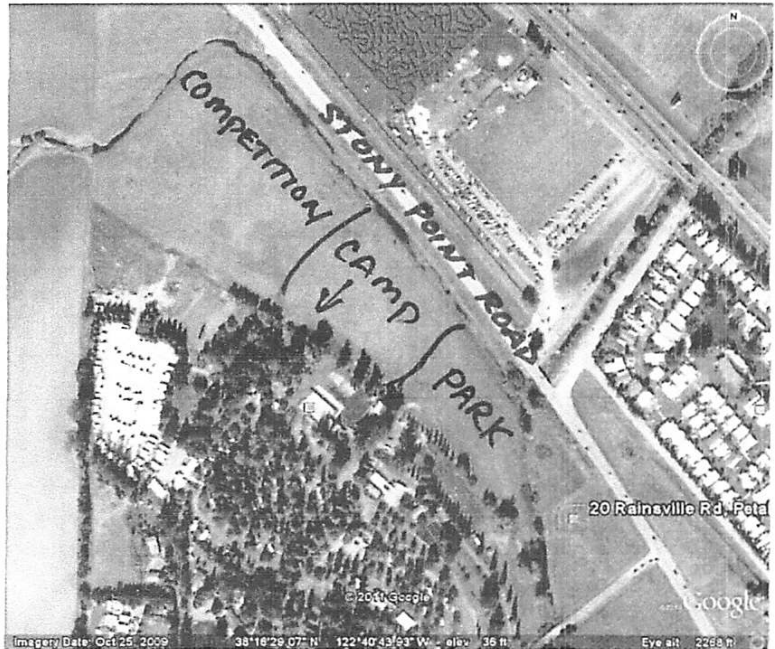


We will be camping in sites 86-102 and 285-294. Mike Millerick will be assigning campsites as registration comes in.

Camporee Staff area will be located in the Kamper Kitchen which is right next to the flush toilets. There will also be 3 Porta Poddies located around the competition area. There is water spigots and BBQ's located at each of the camp sites.

In case of emergency/needed supplies, the office has a small store located inside it. It is open to the public but we are not advertising it to the Scouts. We prefer they stay in the Camporee area. The Pool, Spa and Play area is off limits on Saturday.

Registration anytime after 5pm on Friday. Registration will be located next to the Petting Farm. You will enter on Rainsville Rd and turn next to the Dump Station and then park. Parking will be in the field thru the gate next to the Petting Farm and off to the right. We will not be parking where it says "Parking Lot" on the map.



Redwood Empire 2011 Camporee Helps

Nature Station: Study the lists.

Plants- Ex Credit- is it poisonous, edible, etc.

Birds- Ex Credit- who's feather is it.

Animals- Ex Credit- who's track, pelt, or ???

Stars- Ex Credit- what season is the sky in the picture. Names of certain main stars.

Pioneering Station:

Log Raise- Scout 1 throws the rope over the bar and then ties a Clove Hitch on the stake in front of him. Scout 2 and Scout 3 run up and get the rope. Scout 3 retrieves the rope as Scout 2 picks up the log and holds it in front of his chest while Scout 3 ties a Timber Hitch around the log. Scouts 4 and 5 form the zig zag for the Sheep Bend and twist the ropes and slip the loops over the bights in the rope to complete the Sheep Bend. They hold the little loops so that they will not slip. Scout 2 lets go of the log and they are finished.

Log Sawing- Scout 1 pulls the saw toward himself as Scout 2 pushes the saw toward Scout 1. At the end of the stroke, Scout 2 says something like "NOW", that signals Scout 1 to reverse jobs.

Knot Tying- Scout 2 ties a Square Knot between 2 pieces of rope while Scout 5 ties a Sheep Bend between 2 pieces of rope. Scout 1 ties a Timber Hitch to one of the poles while Scout 3 ties a Bowline Knot on the other end of the same rope. Scout 6 ties a Clove Hitch around the other pole and holds it in place while Scout 3 holds his Bowline Knot as Scout 4 ties 2 Half Hitches through the loop made by the Bowline Knot.

Lashing- practice your lashings. Pay attention to which way the Clove Hitch rolls off the pole as the lashing is started so it doesn't come loose.

Rope Whipping- both Common and West Country whipping will be required. Scout 1 holds the rope for Scout 2 as they do the West Country whipping as it is slow and hard to do it by yourself. Start the whip 1/4" from the loose end and work toward the rest of the rope. Keep wraps very tight and neat.

Orienteering Station:

Compass Course- Practice using a compass. Ex Credit- West Coast Declination.

Measurement Course- have a Scout stand in the field to locate the position of where the end of the measuring stick points to. Have all Scouts pace off the measurement, then add together and average the answer. Have a Scout that you know his height stand next to the bottom of the tree. Use a finger or object that matches his height. Using the object, see how many times that height is repeated up the tree to the top. This gives a close idea of how high the tree is before pacing it off.

Physical Fitness Station:

Obstacle Course- send your fastest Scout thru first to set the pace and excite and encourage the others. Have your strongest Scout in the back to help the needy thru difficult obstacles.

Balance Platform- all Scouts stand or sit around the perimeter. Only one Scout is standing in the center. When you get close to balancing, only the center Scout moves to complete the balance.

Log Pulling- Webelos pull 25'. Level 2 pull 50'. Level 1 pulls 75'. Adults pulls 75'.

Scout Skills Station:

Stretcher Carry- lay tarp under the poles before you start to lash. Have two Scouts hold the poles at the ends and two Scouts hold the poles where they meet as the other Scout(s) lash the poles. Once the Clove Hitch is tied, Scouts roll the poles to put the wraps on instead of typical wrapping.

Signaling- bring a paper and pencil, and write down the letters as they are sent and then look at the charts to figure out the letters.

Nature Station

Below is a list of things to study for the Nature Station quizzes. Of the list of study items, only 10 items from each category will be on the Nature Station Quizzes. There will be 10 plants, 10 birds, etc.

Plants:

Poison Oak Poison Hemlock Stinging Nettle Coast Live Oak Tanbark Oak
Ponderosa Pine Sugar Pine Douglas Fir White Fir Giant Redwood
Calf Bay Laurel Calif Buckeye Madrone Manzanita Cattail Horsetail Sword Fern
Bracken Fern Miners Lettuce Soap Plant Lupine Calif Poppy Coastal Redwood

Birds:

Anna's Hummingbird House Finch Robin Scrub Jay American Crow Wild Turkey
Western Bluebird Red Winged Blackbird Black Phoebe White Tailed Kite
Red Tailed Hawk Barn Owl Golden Eagle Mallard Turkey Vulture American Coot
Snowy Egret Great Blue Heron Common Raven Peregrine Falcon Cinnamon Teal

Animals:

Black Bear Mountain Lion Gray Squirrel Skunk Gopher Jack Rabbit Coyote Grizzly
Bear Badger Mule Deer Gray Fox Elk Bobcat Opossum Raccoon Porcupine
Mole Muskrat River Otter Red Fox Black Tail Weasel

Creatures:

Calif Tiger Salamander Red Legged Frog Rough Skinned Newt Garter Snake Scorpion
Rattle Snake Southwest Pond Turtle Leach River Otter Beaver Calif Golden Trout
Catfish Crayfish Toad Shark Coastal Rainbow Trout Gopher Snake Starfish

Constellations:

Cassiopeia Draco Leo Orion Taurus Ursa Minor Ursa Major Virgo Sagittarius
Pisces Pegasus Libra Gemini Cepheus Capricornus Lepus Polaris Scorpius

Camporee Schedule

Friday May 6:

5pm - ???

9pm - 10pm

Check in and Registration.

SM, ASM, SPL and Staff meeting and social at the Kamp Kitchen area.

Saturday May 7:

5am - 7:45am

7am

7am - 7:45am

8am - 8:30am

8:30am - 5pm

Check in and Registration

Reveille

Breakfast. KP.

Opening Flag Ceremony - Field Shirts required. Announcements.

Camporee Competition - Activity Shirts allowed

Lunch will be on your own at your own discretion and time. No lunch break.

Camporee Competition ends.

5pm

5pm - 8pm

Dinner at the campsites. KP. Break down of campsite for those who plan to leave Saturday night.

Adding up of the score sheets by the Staff.

8pm

8pm - 10pm

10pm

Retire Flags. Field Shirts required.

Awards Campfire. Call out by the Order of the Arrow.

Camporee officially over. Return to campsites or ready to leave for home.

Check out with Registration before leaving the KOA and having passed your campsite inspection before you can leave.

11pm

Taps and lights out.

Sunday May 8:

Sunday ???

Break camp and leave for home. Check out with Registration before leaving the KOA and having passed your campsite inspection before you can leave. Those who plan to stay the whole day need to let the KOA what time you plan to leave.